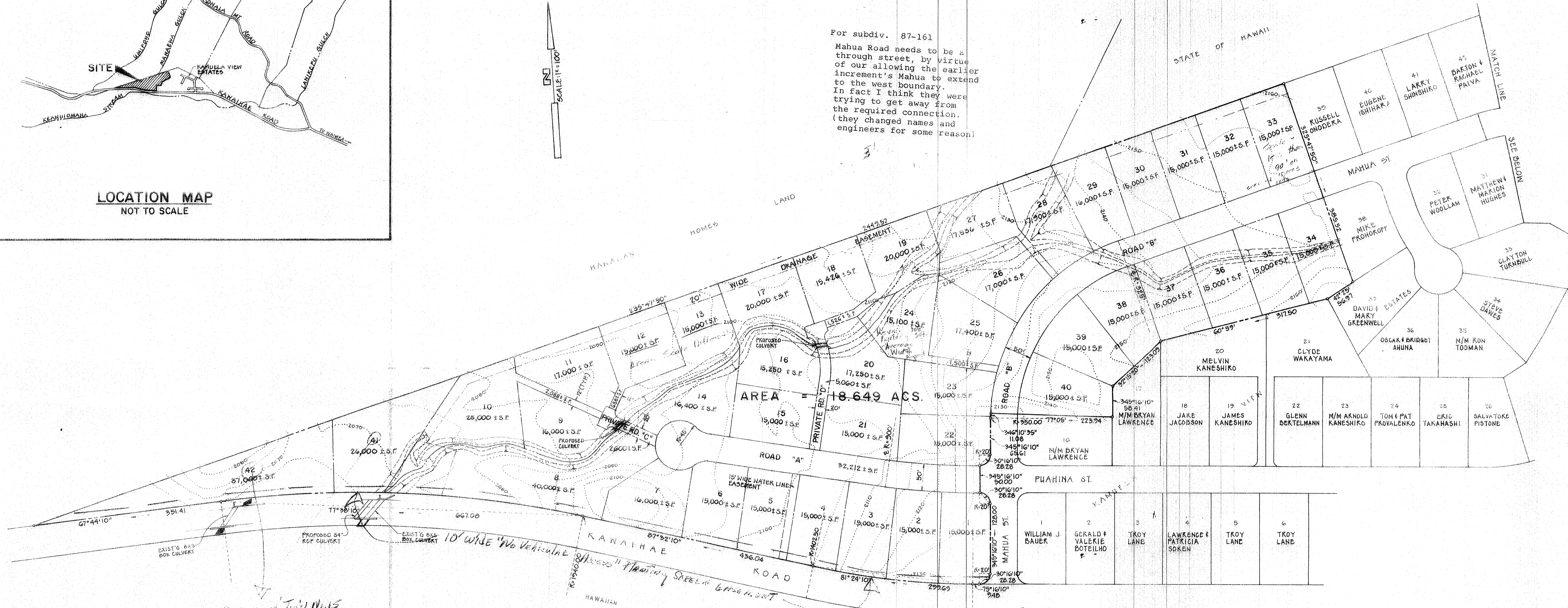


LOCATION MAP  
NOT TO SCALE



For subdiv. 87-161  
Mahua Road needs to be a  
through street, by virtue  
of our allowing the earlier  
increment's Mahua to extend  
to the west boundary.  
In fact I think they were  
trying to get away from  
the required connection.  
(they changed names and  
engineers for some reason)



SEE *Handwritten* Notes  
For *Access*

PRELIMINARY MAP  
SOUTH KOHOLA VIEW ESTATES  
A SUBDIVISION OF LOT F  
BEING PORTIONS OF R.P. 2237, L.C. AW. 8518-B,  
APANA I AND R.P. 4943, L.C. AW. 4199  
INTO LOTS 1 TO 42, INCLUSIVE  
AND ROAD LOTS A, B, C & D  
OULI, SOUTH KOHOLA, ISLAND OF HAWAII, HAWAII  
TAX MAP KEY: 6-2-01-68  
SCALE: 1 INCH = 100 FEET

OWNERS - TROY J. LANE & DAVID G. LANE  
P.O. BOX 2692  
KAMUELA, HI 96743  
ENGINEERS - OKAHARA & ASSOC., INC.  
200 KOHOLA ST.  
HILO, HI 96720

**ISSUED**  
JUL 25 1988  
OKAHARA & ASSOC., INC.  
BY \_\_\_\_\_

