

CANCELLED

CANCELLED

MAP OF WAIMEA HOMESTEADS HAWAII

SURVEYED Nov. 1908
 W. E. ROWELL and JAS. T. TAYLOR
 Scale 200 Ft. to Inch.

Approved Dec. 14, 1908
 (Sgd) E. A. Mott-Smith
 Acting Governor

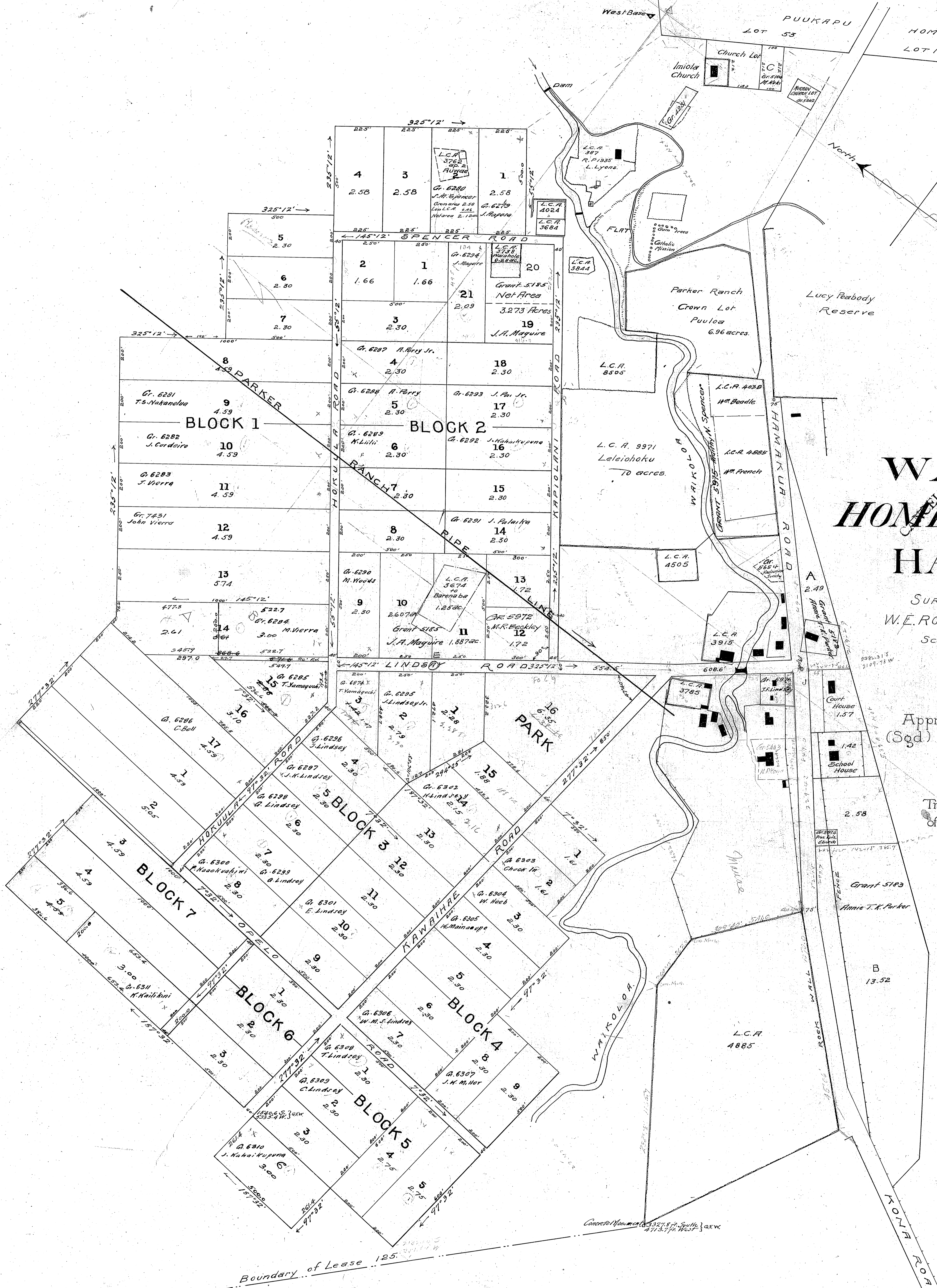
Traced from Tracing on file in the
 office of the Commissioner of
 Public Lands

Jos. Iao by May 1909

Reg. Map No. 2470
 July 1910
 See Reg. Map No. 2575

229-53
 1-27
 237-25

Jul 6 1910



Boundary of Lease 125.

NOTE:
 All azimuths in Blocks 1, 2, 3, 4, 5, 6, and 7 have been corrected
 by adding 1°42' as per survey of Geo. F. Wright - March 1914.
 Grants 5185 and 5186 are issued on the incorrect azimuths.
 Blue lines and figures show additional notations to the
 map as originally traced.
 Co-ordinates referred to West Base Trig. Station

CANCELLED

CANCELLED